

# MW 86 - 5300

DPS 2, FiFi 1 Diesel Electric Platform Supply

## Agents

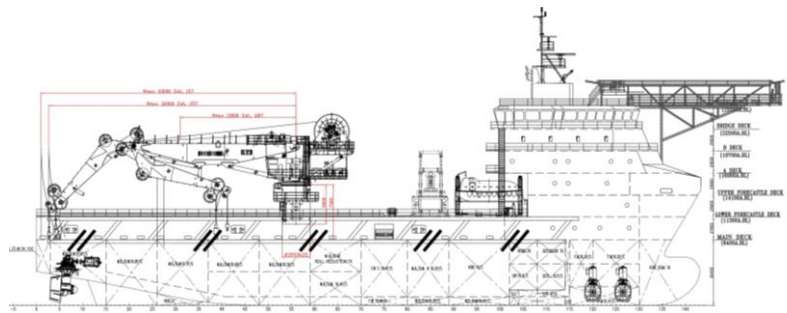
**MARINE ASSETS CORPORATION**

SHIP BUILDERS, OWNERS AND OPERATORS

#3606 Jumeirah Bay X3, X-Cluster,

Jumeirah Lake Towers (JLT) Dubai

Email: info@macoffshore.net



## PRINCIPAL PARTICULARS

Year Built	Nov & Dec 2015
Builder	Fujian Mawei
Call Sign	TBA
Official No.	TBA
Class	ABS +A1 (E) Offshore Support Vessel, SPS, ,UWILD,ENVIRO,GP,OSR-C1 FFV-1, +AMS +ACCU + DPS2
Flag	TBC

## DIMENSIONS

Length Overall	86.00m
Length BP	81.30m
Beam Molded	20.00m
Depth to Main Deck	08.40m
Design Draft	06.40m

## MACHINERY

Main Diesel Generators	4 x 1825 KW (4 x 2447HP)
Emergency Generator	1 x 350 KW
Shore Power	1 x 400A Shore Supply Receptacle
Thrusters	2 x 2200KW 360 deg Azimuths
Bow Thrusters	2 x 880 KW tunnel Thruster

## SPEED

Speed at 05.00m Draft	14.00 Knots. 100% MCR
Type of Fuel	Marine Gas Oil
Fuel Consumption	10 – 12mt at eco speed (10.5knts) 14 – 15mt at service speed (12.5knts) 6-8mt on DP

## CAPACITIES

Fuel Oil	1000 Cu.M
Fresh Water	750 Cu.M
Water Ballast/Drill Water	1900 Cu.M
Dry Bulk	420 Cu.M
Mud / Brine / RO	1350 Cu.M
Metanol / Mud / RO	300 Cu.M
Lub Oil	30 Cu.M
Deadweight	5300 t
Deck Cargo Capacity	2000 t
Cargo Deck Free Area	950 m <sup>2</sup>
Deck Strength	7.5t/ m <sup>2</sup>
Freezer	To store provisions 30 Days
Cooler	To store provisions 30 Days

## PUMPS

Fuel	2 x 150 Cu.M @ 80m Hd
Fresh Water	2 x 150 Cu.M @ 80m Hd
Dry Bulk	2 x 60t Simultaneous Discharge
Mud / Brine	2 x 75 Cu.M @ 20m Hd
Metanol	2 x 50 Cu.M @ 80m Hd

## ACCOMMODATION

Cabins	8 Single 7 Doubles 15 Quads
Total Beds	82 total
1 x Hospital	1 beds
Offices	6
Gym	1
Sewage system	82 POB
Fully Intergrated HVAC	
Fixed gas Detection	H2s and LEL

## DECK CRANE

	100T @ 15m, 3000m Capacity
Cargo rail crane	2.5T @ 15m

## RADIO & NAVIGATION EQUIPMENT

GMDSS: Area 3
1 x Inmarsat C with SSAS and LRIT
1 x MF/HF-DSC Radio Telephone
2 x VHF-DSC Radio Telephone
1 x SSB Transceiver 6 Channel DSC
1 x 96nm X-band Radar 20.1" display
1 x 96nm S band 20.1" display
4 x VHF Portable radios
1 x Magnetic Compass
1 x Gyrocompass
1 x DGPS
1 x Autopilot
1 x Duplex VHF with DSC
1 x Echo Sounder ,Speed log
1X VDR
1 x Anemometer
1XBNWAS
1 x Weather Fax Receiver
1 x Auto Telephone system
1 x Sound Powered Telephone system
1 x PA/Talkback System
Local Area Network (pre installed)
1 x TV and Radio system
1XAIS

## DP KONGSBERG C Pos DPS-2, with following reference systems:

3 x Gyro Compass (One supplied by radio vendor, the other two supplied by DP vendor)
-3 x Wind sensors - 3 x VRUs - 3 x DGPS
1 x Radius
Seachest provided for HIPAP (Optional)
Kongsberg K Master Aft Bridge

## DECK & AUX. EQUIPMENT

Anchors	2 x 3037.5kgs HHP
Chain	50mm U2 grade Tot 522.5 M
Anchor/ Mooring Windlass	2 x 10t @ 0 – 09m min C/W warping heads
Tugger Winches	2 x 10t @ 12m min
Capstans	2 x 10t @ 12m min

## FIRE EXTINGUISHING SYSTEM

Fi Fi Class 1 2 x 1600 Cu.m @ 125m Hd
Monitors Remote control 2 x 1200 Cu.M One with dual Foam /Water
Emergency Fire Pump 40 Cu.M @ 60m Hd
Fixed Co2 System Engine Room / EG Room
Fixed Water Mist System Engine Room
4 x fireman outfits
2 x fire blankets for engine room and galley

## LSA EQUIPMENT

1 x Diesel Powered Fast Rescue Boat for 15 persons. With A Frame
Launch and Recovery Davit
2 x 25 man life rafts SOLAS
2 x 85 Man TEMPSC
1 x EPIRB SOLAS approved
1 x Line Throwing Apparatus
2 x Orange Smoke Signals
SOLAS approved line throwing appliance
1 x First Aid Kit
1 x daylight signaling light
1 x air horn

## AUXILIARY EQUIPMENT

1 x 10 t/d Fresh Water Maker
2 x Ships Air Compressor 22 m <sup>3</sup> hr
Oily Bilge Water Separator

Particulars given are without warranty as to correctness and interested parties must satisfy themselves by inspection of ship's certificate or by other means of vessel's specifications.

