

# MM 60-5000

5000 BHP, DP2, FiFi 1, Multipurpose Offshore Support Vessel

## Agents

### MARINE ASSETS CORPORATION

SHIP BUILDERS, OWNERS AND OPERATORS

#3606 Jumeirah Bay X3, X-Cluster,

Jumeirah Lake Towers (JLT) Dubai

Email: info@macoffshore.net



MM 60 - 5000

## PRINCIPAL PARTICULARS

Year Built	2013
Builder	China
Call Sign	TBA
Official No.	TBA
Class	ABS +A1 (E) Offshore Support Vessel, FFV 1, SPS,+AMS + DPS-2.,
Flag	Marshall Islands

## DIMENSIONS

Length Overall	59.60m
Length BP	56.90 m
Beam Molded	15.20m
Depth moulded	6.20m
Design Draft	4.80m

## MACHINERY

Main Engines	2 x 2500 BHP
Propellers	2 x 1800Kw 360 deg Azimuths FPP
Bow Thrusters	2 x 450 Kw tunnel Thrusters
Generators	2 x 600 kw/3 ph/415 V/50Hz 2 x 350 kw/3 ph/415 V/50Hz
Emergency Generator	1 x 80 kw/3 ph/415 V/50Hz

## SPEED

Speed	12.60 Knots @ 100% MCR
Type of Fuel	Marine Diesel Oil
Fuel Consumption	TBA

## CAPACITIES

Fuel Oil	400 m <sup>3</sup>
Fresh Water	330 m <sup>3</sup>
Water Ballast/Drill Water	500 m <sup>3</sup>
Dry Bulk	180 m <sup>3</sup>
Mud / Brine	360 m <sup>3</sup> (with agitators)
Deadweight	1500 T at design draft
Deck Cargo Capacity	TBA
Cargo Deck Free Area	400 m <sup>2</sup>
Deck Strength	7t/ m <sup>2</sup>
Freezer	To store provisions for a period of 30 Days
Cooler	To store provisions for a period of 30 Days

## PUMPS

Fuel	1 x 150 m <sup>3</sup> /hr @ 80m hd
Fresh Water/Drill Water	2 x 100 m <sup>3</sup> /hr @ 80m hd
Dry Bulk	2 x 75 m <sup>3</sup> /hr, Simultaneous discharge
Mud / Brine	2 x 75 m <sup>3</sup> /hr @ 75m hd

## ACCOMMODATION

One Man Cabins	4
Two Man Cabin	3
Four men cabins	10
Total	<b>50 men</b>
1 x Hospital	1 beds
Offices	
Gym	
Fully Air Conditioned.	HVAC Integrated with F&G system
Fixed gas Detection	H2s and LEL

## AUXILIARY EQUIPMENT

1 x 5 t/d RO Fresh Water Maker  
Oily Bilge Water Separator  
2 x Ships Air Compressor 22m<sup>3</sup>/hr  
Sewage treatment plant suitable for 50 men

## RADIO & NAVIGATION EQUIPMENT

GMDSS: Area 3  
1 x Inmarsat C and F  
1 x MF/HF-DSC Radio Telephone  
2 x VHF-DSC Radio Telephone  
3 x VHF Portable radios  
1 x Navtex Receiver,  
1 x EPIRB, 2 x SART  
1 x Auto Telephone system  
1 x Sound Powered Telephone system  
1 x PA/Talkback System  
1 x TV and Radio system  
1 x Magnetic Compass  
1 x Gyrocompass  
1 x DGPS  
1 x Autopilot  
2 x day light display radars. One with Automatic Electronic Plotting Facility  
1 x Echo Sounder 1x Speed log 3 x2000w Search lights  
1 x Anemometer 1 x Barometer, 4 x Clinometer, 1 x Chronometer  
1 x Weather Fax Receiver  
1 x daylight signaling light  
Local Area Network (LAN) connected  
AIS

## DP KONGSBERG C Pos DPS-2, with following reference systems:

2 x Gyro Compass - 3 x Joystick, 2 x DGPS, 1 x Radius

## DECK & AUX. EQUIPMENT

Anchors	2 x 1200kgs HHP
Chain	34mm U2 grade Tot 412.5 M
Anchor/ Mooring Windlass	1 x 5t @ 12m/min C/W warping heads
Tugger Winches	2 x 10t @ 12m/min
Capstans	2 x 5t @ 15m/min
Deck crane	18 @ 12M

## FIRE FIGHTING & LSA EQUIPMENT

External FiFi	Class 1
Pump	2 x 1500 m <sup>3</sup> /hr @ 140 m hd
Monitors	2 x 1200 m <sup>3</sup> /hr @ 12 bar with remote control
Dispersant spray boom	2 x 25 m <sup>3</sup> /hr @ 30 m hd
Water Spray curtain round the hull and wheel house	

## Fire Extinguishing System

Engine Room CO2 Sstem  
12 x Fire hydrants and fire extinguishers as per Class requirements  
4 x fireman outfits  
4 x fire blankets for Engine room and galley

## Life Saving Equipments

6 x 25 man life rafts SOLAS approved each side  
8 x Lifebuoys SOLAS approved  
50 Lifejackets as per SOLAS requirement  
1 x Line Throwing Apparatus  
12 x Parachute Distress Signals  
2 x Orange Smoke Signals  
SOLAS approved line throwing appliance  
1 x First Aid Kit  
1 x 15 men diesel powered FRC with davit for Launch/Recovery.

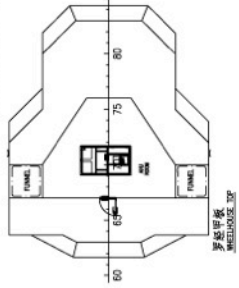
船名	AWESOME
船型	平台供应船
船东	中远海运集团
船主	中远海运集团
设计	中远海运集团
建造	中远海运集团
运营	中远海运集团
维护	中远海运集团
其他	

PRINCIPAL DIMENSIONS

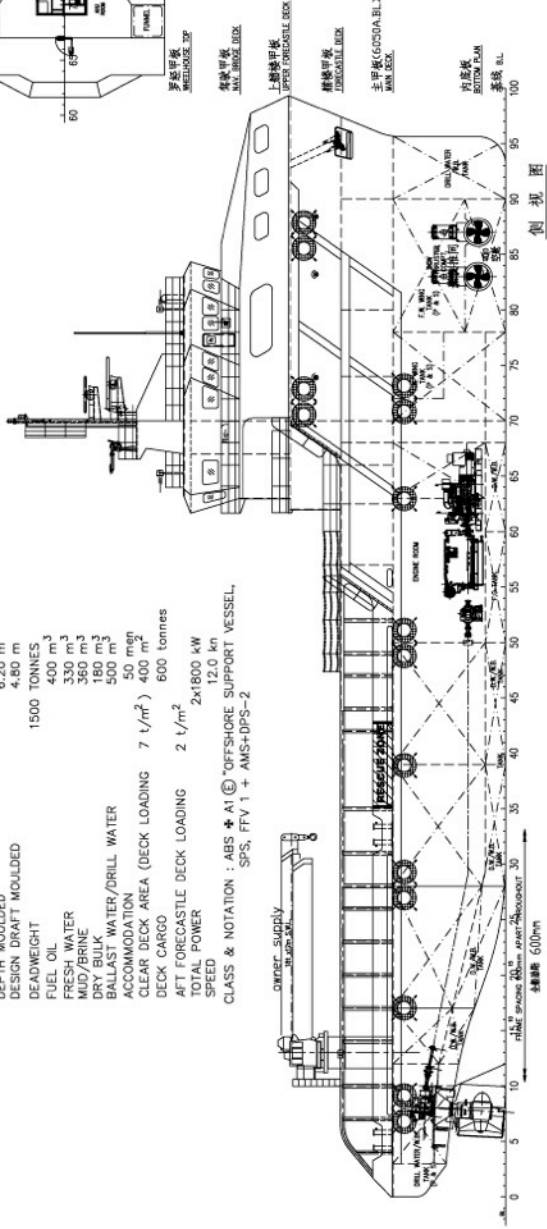
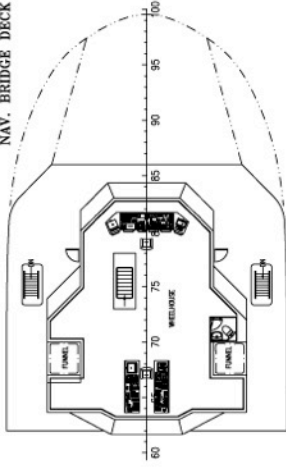
- LENGTH OVERALL ~56.60 m
- BREADTH MOULDED 15.20 m
- DEPTH MOULDED 6.20 m
- DESIGN DRAFT MOULDED 4.80 m
- DEADWEIGHT 1500 TONNES
- FUEL OIL 400 m<sup>3</sup>
- FRESH WATER 330 m<sup>3</sup>
- MUD/BRINE 360 m<sup>3</sup>
- DRY BULK 180 m<sup>3</sup>
- BALLAST WATER/DRILL WATER 500 m<sup>3</sup>
- ACCOMMODATION 50 m<sup>2</sup>
- CLEAR DECK AREA (DECK LOADING) 400 m<sup>2</sup>
- DECK CARGO 600 tonnes
- AFT FORECASTLE DECK LOADING 2 t/m<sup>2</sup>
- TOTAL POWER 2x1800 kW
- SPEED 12.0 kn

CLASS & NOTATION : ABS A1 OFFSHORE SUPPORT VESSEL, SPS, FFV 1 + AMS+DPS-2

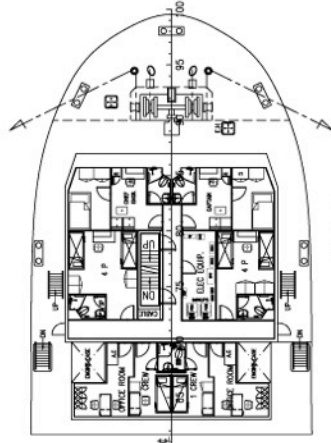
罗盛甲板  
WHEELHOUSE TOP



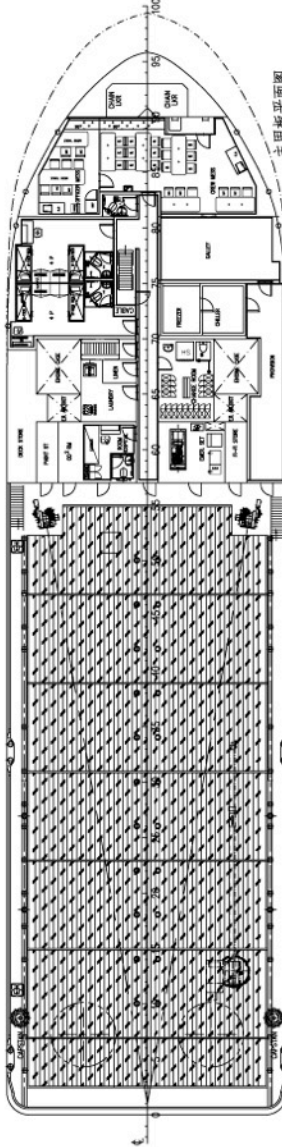
驾驶室甲板  
NAV. BRIDGE DECK



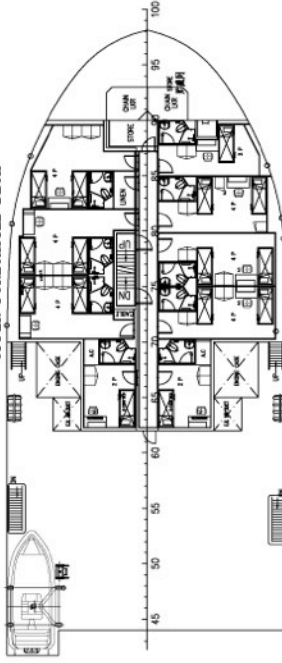
侧视图  
OUTBOARD PROFILE



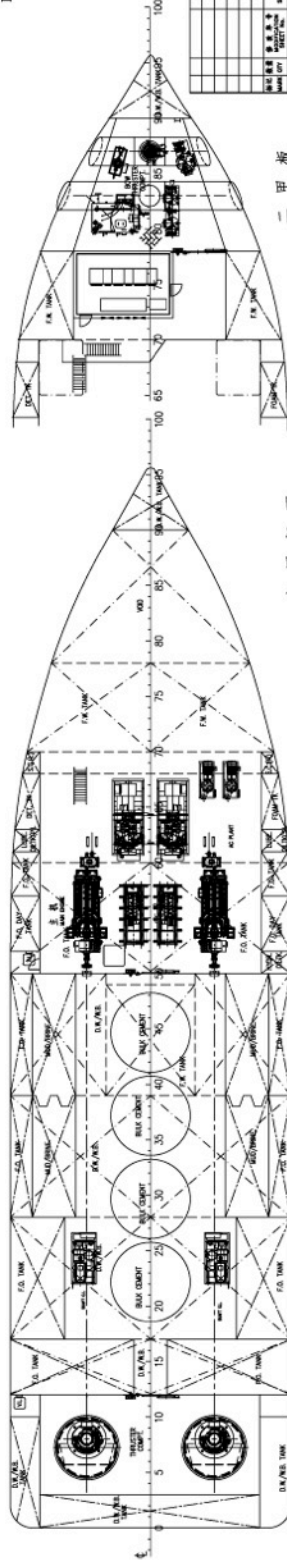
上精修甲板  
UPPER FORECASTLE DECK



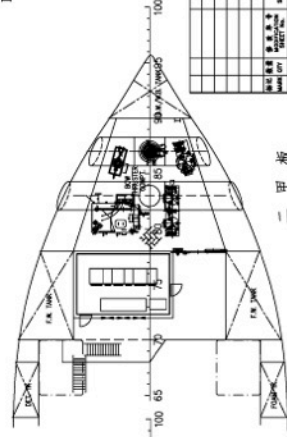
主甲板平面图  
MAIN DECK PLAN



精修甲板  
FORECASTLE DECK



主甲板下  
BELOW MAIN DECK PLAN



二甲板  
TWEEN DECK PLAN

合同设计 CONTRACT DESIGN	
DWG:	
图号	AWESOME-01
比例	1:100
日期	2023.03.27
设计	AWESOME
审核	AWESOME
批准	AWESOME
制图	AWESOME
校对	AWESOME
绘图	AWESOME
工艺	AWESOME
材料	AWESOME
备注	AWESOME
其他	AWESOME
说明	AWESOME
日期	2023.03.27
材料	AWESOME
备注	AWESOME
其他	AWESOME
说明	AWESOME
日期	2023.03.27
材料	AWESOME
备注	AWESOME
其他	AWESOME
说明	AWESOME

56.6m 平台供应船  
PLATFORM SUPPLY VESSEL

AWESOME  
GENERAL ARRANGEMENT

AWESOME SHIPBUILDING LTD  
AWESOME SHIPBUILDING LTD  
AWESOME SHIPBUILDING LTD

AWESOME SHIPBUILDING LTD  
AWESOME SHIPBUILDING LTD  
AWESOME SHIPBUILDING LTD